

INSTALLATION INSTRUCTIONS

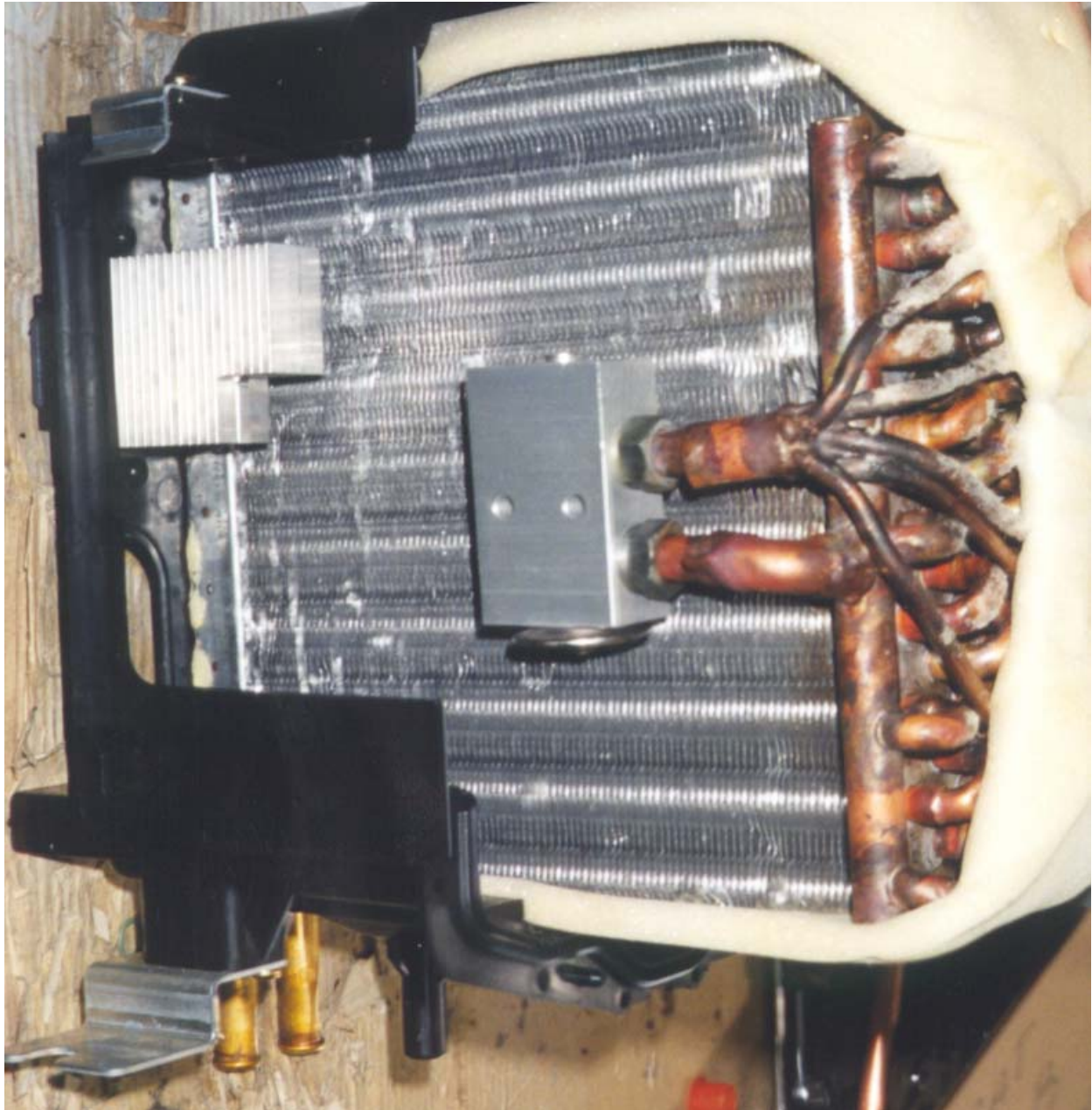
CAT 315B L EXCAVATORS

MODEL SEQUENCES: 1SW 215+, 3AW 990+, 7RZ 284+

Hammond Air Conditioning Ltd.
125 Samnah Cres.
Ingersoll, On.
N5C 3J7
1-800-267-2665
1-888-267-3745 (FAX)

EVAPORATOR:

The evaporator is mounted inside the heater/blower housing found behind the seat and under the plastic moldings.

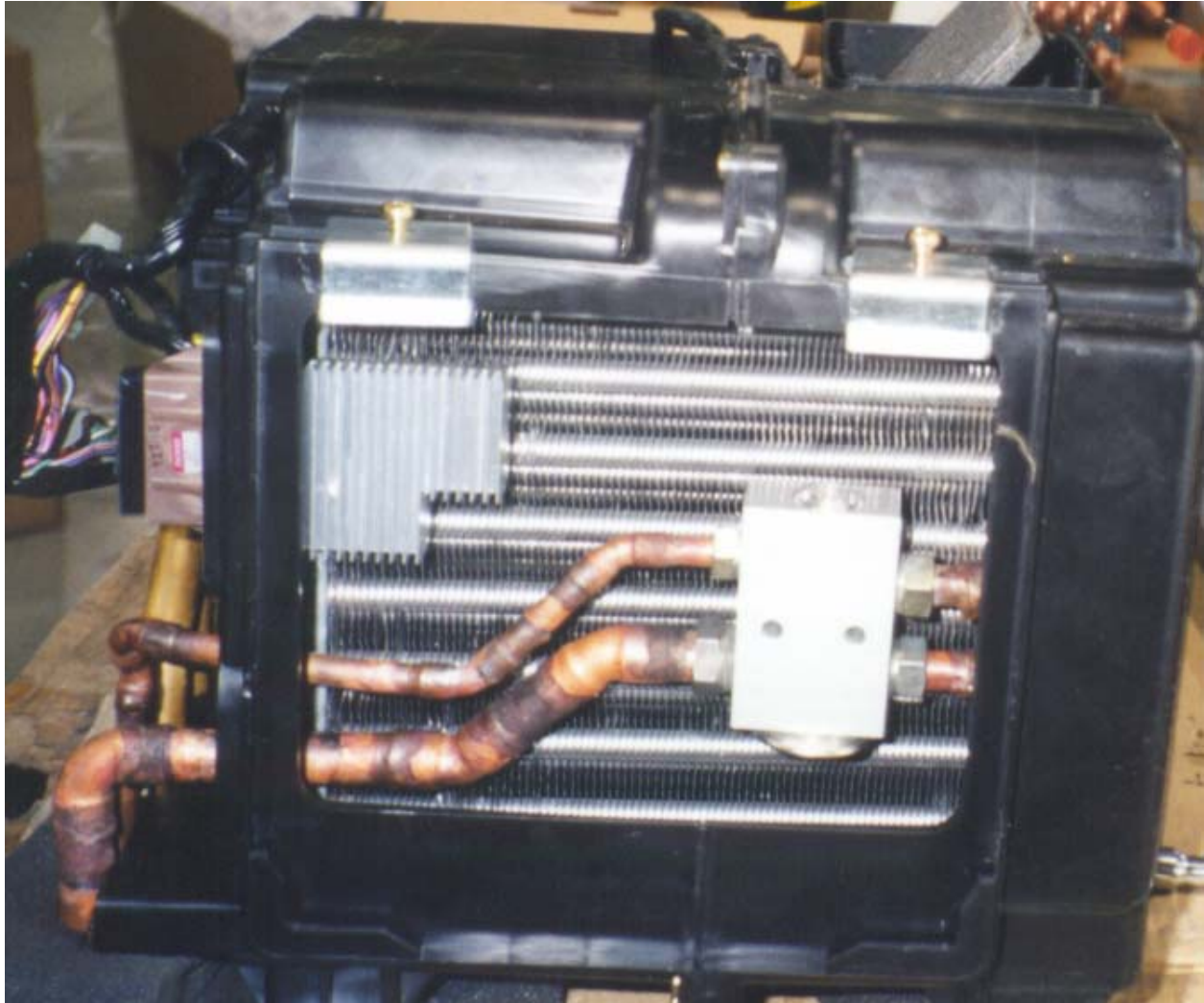


Evaporator inserted into one half of casing showing set-up.

Remove the plastic covers and shrouds from above the heater/blower housing. Remove the assembly from the cab. It will be necessary too disconnect the heater lines under the cab. When the box has been removed from the cab, remove the blower motor assembly and disassemble the casing to gain access to the heater core area. **IMPORTANT - when taking the box apart make**

sure to note the correct orientation of the door controller parts for reassembly.

Before fitting the evaporator into the box alongside the heater core, remove any plugs from the drain holes and ensure they can drain outside properly. Mount the evaporator into place with the copper lines extending out through the knockouts in the plastic casing. The evaporator is held in place by friction fit, so ensure the foam is in place around the coil.



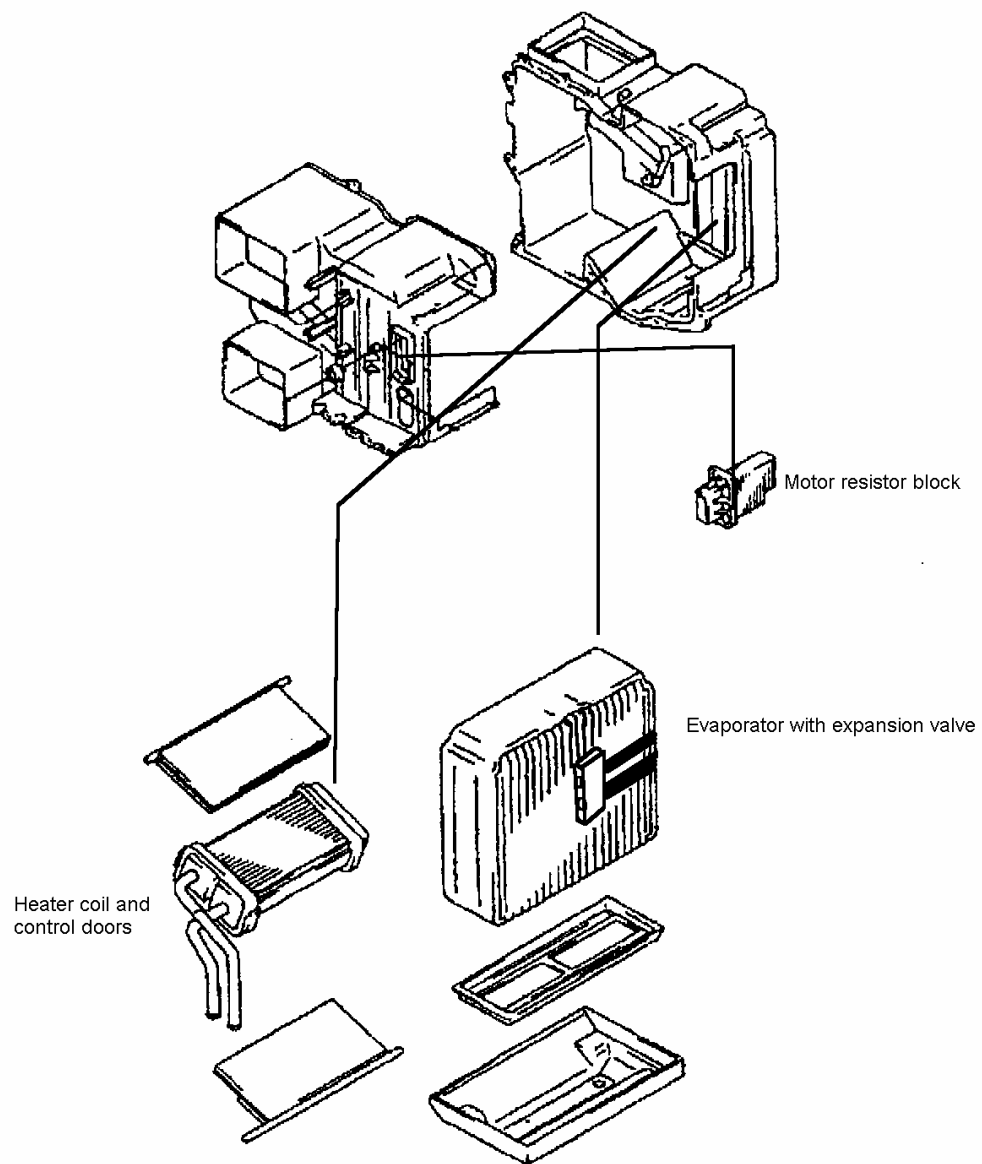
View of evaporator face showing expansion valve and supply lines out of box.



Side of evaporator housing assembly showing tubing routing out and down through seal material for floor.

The copper lines will extend through the hole in the side of the box. The clutch wire can be run out of the cab through the same holes. The thermostat probe should be inserted into the coil through one of the small knockouts in the casing of the box. Install drain assemblies re-installing the heater/evaporator assembly.

Re-assemble and re-install the assembly into the cab. Do not re-install plastic interior panels until the system has been tested for leaks and electrical performance. Also, test to make sure that all of the controller motors are operating properly.



Assembly schematic for evaporator and heater unit.

COMPRESSOR:

The compressor mounts to the engine on the location shown in the pictures, on the lower right when facing down the engine toward the fan.

The first step is to mount the supplied add-on pulley to the crankshaft with the hardware provided.

Mount the compressor mount onto the location shown for the factory assembly using the metric hardware provided. Do not tighten the mounting hardware down completely until checking the alignment with the compressor in place. Once the alignment is checked, tighten down the bolts and mount the compressor. Place the drive belt in place and tighten up the compressor to take up the tension.



Compressor mount and drive in place on 315 Cat

CONDENSER MOUNTING:

The condenser assembly is designed to mount on existing bolt points on the outside of the radiator frame. The receiver drier is pre-mounted to the condenser frame to simplify installation.

1. Open the access panel to radiator area and remove any fan screens in place.
2. Find the four bolt holes (pre-threaded) to mount the condenser assembly to and clean out the threads if necessary. (M10 coarse thread)
3. Bolt the condenser and frame assembly in place using the hardware provided. The four ½" spacers are used to space the frame away from the bolt holes.

HOSE RUNS:

5/16" Hose Drier to Evaporator

The 5/16" hose runs from the drier mounted on the condenser brackets through under the cab to the fitting extending down from the evaporator.

The fittings at both ends of the hose are pre-crimped and tested for leaks.

13/32" Hose Compressor to Condenser

The 13/32" hose is run from the compressor to the condenser out of the engine compartment alongside the radiator and out to the condenser as shown in the pictures.

Hose wrap the exposed sections of the hose and use cable ties to secure the hose in place to prevent rubbing.

The fittings are already crimped in place at both ends and have been pressure tested. The fitting with the 134a port in place is the compressor end of the hose. Hose-wrap as required and secure into place.

1/2" Hose Compressor to Evaporator

The 1/2" hose runs from the compressor to the evaporator through the engine compartment and under the cab to the fitting on the evaporator.

The fittings at both ends have already been crimped in place and pressure tested. The hose is run through the engine compartment with the 13/32" hose and then to the evaporator with the 5/16" hose. The fitting with the 134a port is the compressor end of the hose. Hose-wrap exposed sections and any places the hoses may rub. Secure using cable ties and clamps where necessary.



View showing underside of evaporator area with hose assemblies.

ELECTRICAL:

Power to control the thermostat and clutch comes off the heater power wire (#124). Hook into the wire using an instant power tap and connect to the thermostat switch. From the switch run down to the pressure switches and to the compressor. See the wiring diagram for the electrical hook ups.

